

WASHINGTON State Employee

# 100% Union Proud

## “This is one of the best things our union has ever done!”

“The **Member Connection Center** is an excellent resource for our membership. It allows us to **immediately connect** with a council representative. I have been able to receive **instant information** that has allowed us to work through issues in our office in conjunction with our local WFSE/AFSCME council representative. Our office was able to **prevail** on several serious issues at the Department of Agriculture since the advent of the MCC. **This is one of the best things our union has ever done!**”

**Micah Cooper**  
Department of Agriculture  
Local 1326, Yakima

**NOW LIVE STATEWIDE:**



Toll-free  
**833-MCC-WFSE**  
833-622-9373 M-F 8am-6pm  
MCC@wfse.org

All about the MCC. Page 4.

## 100% Union Proud

### Out of tragedy, an outpouring of shared leave for Melinda Brockie

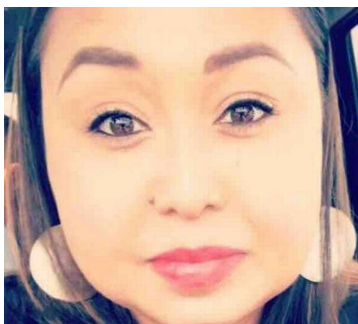
**Melinda Brockie**, the Local 1060 member shot and seriously wounded in the Las Vegas tragedy, came home to the Lummi Reservation in Northwest Washington Oct. 25.

She was honored with a parade and a police escort from the Bellingham International Airport to her home, according to the Bellingham Herald.

Brockie, a social service

specialist 3 with DSHS Children's Administration in Bellingham and a member of Local 1060, was shot through the jaw during the Route 91 Harvest Music Festival in Las Vegas Oct. 1.

Her family expects a long recovery, the Herald reported. DSHS reports that thanks to the generosity of state employees, Melinda has already received the statutory maximum amount of shared leave.



Melinda Brockie, Local 1060

The agency had expedited her shared leave request.

### Appeals court backs us, blocks Freedom Foundation

The Washington Court of Appeals has upheld WFSE/AFSCME members' right to privacy and upheld the union's appeal against the Freedom Foundation.

In the unanimous Oct. 31 decision, the court blocked the Freedom Foundation's attempt to get members' dates of birth – which in this day and age opens the door to all kinds of privacy, safety and security breaches.

The court said WFSE/AFSCME and other unions proved that the state constitution's right to privacy provision “protects state employees' full names associated with the corresponding birthdates from public disclosure.”



See **PRIVACY**, page 2

### Yakima Valley School member wins Althea Lute Memorial Scholarship

**Stephanie Hutson-Wade**, a Local 1326 member at Yakima Valley School in Selah, has won this year's \$5,000 WFSE/AFSCME Althea Lute Memorial Scholarship Award.

Hutson-Wade is a social service specialist 3 at YVS, “working with people with developmental disabilities in crisis and respite stays,” she says.

She plans to use the scholarship to complete a bachelor's of applied science in business management degree at Yakima Valley College. She says she wants to



*This scholarship named in honor of Althea Lute (left), former WFSE/AFSCME staffer and UW Local 1488 officer and activist, who died in 2011.*

put her degree to use helping “people with disabilities and dual diagnosis in Yakima County.”

Her devotion is personal. “A calling has been put



Stephanie Hutson-Wade, Local 1326

on my life to advocate and be the voice for people with disabilities and psychiatric conditions,” Hutson-Wade says.

“My brother Nathan is 36 and has autism and my

daughter Alyssa is 19 and has autism.

“I cannot remember a time in my life ever that has not revolved around care giving.”



## PRIVACY, from page 1

“The decision is a huge victory for state employees who only want to do their job keeping Washington safe, sound and healthy,” said Tim Welch, spokesperson for the 44,000-member WFSE/AFSCME, our union.

“They shouldn’t have to worry about the Freedom Foundation getting and using

personal information that violates the privacy, safety and security of state employees and their families.”

The court ruled: “We hold that state employees have a constitutionally protected expectation of privacy in their full names associated with their corresponding birthdates. Because the employees have a constitutionally protected

expectation of privacy, and the unions have satisfied the requirements for an order granting permanent PRA injunctions, the trial court erred by denying the unions’ motions for permanent injunctions. Accordingly, we reverse and remand for further proceedings consistent with this opinion.”

The court said the dates of birth “of individually iden-

tified state employees are not in the public interest because they do not inform the public of facts related to a government function.”

The case will go back to superior court. But the appeals court ruling is the latest of WFSE/AFSCME’s string of court victories against attempts by groups like the Freedom Foundation from invading our privacy.

According to The Stand, the Freedom Foundation is a well-funded right-wing organization with the self-declared mission of destroying unions. It refuses to disclose its donors, but it has leaked out that the group’s biggest funders are national foundations set up by billionaires like Harry Bradley, Thomas Roe, the Scaife and Walton families.



Photo: Tania Marie Rosario

## UW member speaks truth to power about King County-owned Harborview Med Center

Local 1488’s **Marcie Serafica**, swing shift custodian at Harborview Medical Center, testifies in support of improved employee-management relations at King County Council Committee of the Whole meeting Oct. 4 in Seattle. With her is **Rod Palmquist**, WFSE/AFSCME’s higher education strategic coordinator.

It was the annual status update on King County’s management agreement with the UW.

King County owns Harborview, but contracts with the UW to run it.

Thanks to the advocacy of Local 1488 members like Serafica, the latest 15-year agreement has strong provisions mandating the UW treat its employees in line with the values of King County.

The groundwork was laid a few years back over the UW’s mistreatment of our former call center employees...and the UW’s attempt to close Harborview’s specialty clinics, she said. But Serafica said the union and council need to “remain vigilant” to hold the UW’s feet to the fire.

## Federal level attacks impact Washington retirees

Millions of current and future retirees will now face the prospect of increased costs for both their medical and long term care needs.

“It’s hard not to get fed up with it all and just turn off the TV, cancel the paper and ignore it altogether,” said Larry Flue, a recent retiree from the Dept. of Transportation in the Lynden area.

“While I know I can’t do that, I do want to sometimes.”

This is a sentiment that is heard frequently across generations.

While frustrating to watch, developments in legislation at the federal level require public-sector workers to remain engaged and active in order to protect their retirement security.

“We have a lot at stake right now,” says Lisa Randlette, a recent retiree from Local 443, “so it’s important to let our elected federal officials know we’re paying attention and we will hold them accountable for the adverse changes to our healthcare, savings and pensions!”

What’s at stake? Affordable, quality healthcare and the ability to save for a secure retirement.

The budget passed by the U.S. House and currently in the U.S. Senate



Flue



Randlette



**RPEC CORNER**

Online: [rpecwa.org](http://rpecwa.org)

calls for cuts of \$550 billion from Medicare and \$1 trillion from Medicaid over the next

10 years, as well as major cuts to education and other services.

The measure allows the Senate to avoid any filibuster of their legislation in order to give tax cuts to corporations and America’s richest families.

Millions of current and future retirees will now face the prospect of increased costs for both their medical and long term care needs.

This bill would also grind away at traditional Medicare, and funnel younger and healthier retirees into private health plans, leaving older, less-healthy beneficiaries to sink the traditional Medicare program.

Current retirees understand all too well how the ever-increasing costs of health care impact their lives.

According to Fidelity, the average retiree will pay more than \$250,000 during her or his retirement years, representing a more than 70 percent increase since 2002. This does not include the added expenses of nursing home or long-term care.

Most state employees will continue to see significant increases in their health care costs due to the completely unchecked appetite of the health insurance and drug companies desire for profits.

In the open market, premiums alone will jump more than 36 percent.

Washington state’s insurance commissioner says that the biggest factor in this increase is because of the administration’s decision to stop paying federal subsidies to insurers. These individual market increases illustrate the need for state employees and retirees to continue our efforts through the Public Employees Benefits Board (PEBB) to have access to high quality, affordable healthcare coverage.

Unfortunately, rising healthcare costs are not the only issue concerning public employees. Recently, Preston Rutledge was nominated to lead the Employee Benefits Security Administration at the Department of Labor. Rutledge is currently an aide to the Senate Finance Committee and was an architect of several pieces of legislation aimed at undercutting pensions.

At the same time, according to a report by Willis Towers Watson, spending by U.S. employers on retirement benefits, including employer contributions to pensions, 401(k)s and retiree health care, fell from 9.1 percent of worker pay in 2001 to 6.8 percent in 2015. The largest driver was the replacement of traditional defined-benefit pensions “by stingier, 401(k)-style, defined-contribution plans.” Spending on traditional pensions plunged 76 percent, to less than 1 percent of worker pay. Medical benefits for retired workers became increasingly scant, falling from 1.2 percent of worker pay to just 0.2 percent. At this point, public employees in our state still retain a defined benefit plan. RPEC will remain vigilant with WFSE in fighting any legislation eliminating that option.

*RPEC is committed educating and empowering both current and future retirees to protect their hard earned benefits. For more information, please visit our website: [www.rpecwa.org](http://www.rpecwa.org)*

## Washington State Employee

**Washington State Employee (USPS 981-200)** is published monthly, except February and July, for \$5.08 per year by the Washington Federation of State Employees/AFSCME Council 28 • AFL-CIO, 1212 Jefferson St. S.E. Suite 300, Olympia, WA 98501. Affiliated with the American Federation of State, County and Municipal Employees (AFSCME) and the Washington State Labor Council, AFL-CIO.

**Periodicals postage paid at Olympia, WA and at additional offices. Circulation: 42,000.**

**POSTMASTER:** Send address changes to Washington State Employee, 1212 Jefferson St SE Suite 300 Olympia WA 98501-7501

**Sue Henricksen**, President

**Greg Devereux**, Executive Director

Editor Tim Welch  
e-mail: [tim@wfse.org](mailto:tim@wfse.org) • Internet: [www.wfse.org](http://www.wfse.org)  
Member, ILCA

## Remembering Larry Goodman



Word reached us just as this newspaper hit the press that Larry Goodman, the WFSE director of personnel boards and later field services from 1967 to 1996, died Nov. 11. Goodman was a major force in bringing about our historic, half-billion dollar pay equity settlement for women in Washington state government, known as the comparable worth settlement. In 1989, he masterfully guided an upgrade package through the old State Personnel Board that brought huge pay raises to attendant counselors at residential habilitation centers. At the time ACs made up the largest job class in state government.

As more details come in, we’ll pass them along in the next issue of this paper, online at [wfse.org](http://wfse.org) and on our Hotline 1-800-562-6102.

**ELECTRONIC DELIVERY OPTION (NEW!):** If you’d like to save paper and postage, you can receive notice when this newspaper is posted online. To register, go to [WFSE.org/enews/](http://WFSE.org/enews/) and locate the sign-up form at the bottom of the article to get our free email alerts. Click on WSE (Washington State Employee) and provide your email. You’ll receive an email message when the newspaper is added to WFSE.org. *If you’re a represented non-member fee payer and you don’t wish to receive this publication in any format, e-mail us at [contact@wfse.org](mailto:contact@wfse.org), or write: WFSE/AFSCME, 1212 Jefferson St. S.E., Suite 300, Olympia, WA 98501.*





# CONVENTION 2017

The theme of WFSE/AFSCME’s 2017 Convention was “100% Union Proud.” But what does that mean? Four delegates who weighed the facts explain why they signed a new 100% Union card:



“By signing a union card, you’re becoming part of a large group. And that large group has power. And that power protects you. It protects families. And it protects everything around us. It gives us the social services we need to make our community a better place.” -- **Brooks Salazar**, Board of Industrial Insurance Appeals, Seattle, Local 304

Meet newly elected union Executive Board members. See pages 7 & 8.



“Families in Washington state deserve expert services carried out by highly qualified professionals. And if we don’t have a union making this a ‘job of choice,’ then we would not have those people working in this agency.” -- **Charles Loeffler**, DSHS, Seattle, Local 843



“Our union is important because we’re strong in numbers. And that’s what we built our foundation on. So we’ve just got to stay together.” -- **Denzell Deloney**, University of Washington, Seattle, Local 1488



“I’m 100% Union because I believe that every worker should earn a living wage.” -- **Jacquie James**, State Parks, Tumwater, Local 1466

## WFSECon17 delegates say: “100% Union – Aim Higher”

Delegates weigh facts, map course to win as Janus court case looms

WFSE / AFSCME’s 2017 biennial convention last month saw delegates debate, network, elect officers and put us on the path to victory against an expected adverse United States Supreme Court decision in the Janus case.

The high court’s hearing on the Janus case is expected early next year. The Sacramento Bee said the Janus case “threatens to silence workers’ voices.”

But WFSECon17 delegates said it doesn’t have to be this way.

“We don’t need to lose members because of Janus,” WFSE / AFSCME Executive Director Greg Devereux said in his “State of the Union” address to the convention on Oct. 15.

The 412 delegates defined the “path to victory” by passing a resolution leaving no doubt our aim is to sign up members on the new 100% Union card.

That measure (Resolution 8 submitted by Seattle Local



304) renews “our commitment to carry on the fight for fairness, justice and dignity

for all workers no matter how fierce the opponents of equality and democracy are,



Steven Yates, president of Rainier School Local 491 in Buckley, with other Local 491 delegates, accepts the Howard Ocobock Award Oct. 13 for being the local with the most PEOPLE members signed up at the MVP level.



AT LEFT: The Convention honored six recipients of the union’s Medal of Valor Awards at the Friday night gala. From left: **Elvin Bermudez**, Local 931, Eastern Washington University (accepting for co-winner **Nick Bickley**); **Mike Culley**, Local 443, Labor and Industries; **John “Kelly” Faircloth**, Local 53, Corrections; and **Kristin Tripp**, Local 1253, Corrections (accepting for co-winner **Jose Sabalsa**).

no matter how great the odds against us may be, knowing that our union must lead in the labor movement and across the political spectrum in order to help sustain the hope for a better future for all.”

The emphatic action came in the wake of weeks of annoying direct mail, phone calls and unwanted knocks on doors from this state’s branch of the national network (the “Freedom” Foundation) that is out to “de-fund and de-fang us,” AFSCME President Lee Saunders told delegates Oct. 13.

“What’s at stake here is nothing less than freedom...,” Saunders said. “Our job will never be done....The other side has deep pockets and political advantages but we’ve got guts and we’ve got grit. We’ve got thick skin

See WFSECON17, page 5



Gov. Jay Inslee and AFSCME Pres. Saunders open WFSECon 17 Oct. 13.



Devereux swears in re-elected officers Hall, Kuschel, Henricksen and Stanley



## All about the Member Connection Center

**NOW LIVE STATEWIDE:**



The one-stop shop for union information and member support!

Toll-free  
**833-MCC-WFSE**  
833-622-9373 M-F 8am-6pm  
MCC@wfse.org

### Get answers with a single phone call!

- Updates and information on our contract and union rights.
- RSVP for workplace-based trainings, meetings, rallies & events.
- Details about local events and meetings.
- Help with discipline and grievances.
- Inquiries about classification, pay, and allocations.

### Connecting members to information about contract rights and union benefits

1. The Member Connection Center is open to assist WFSE/AFSCME members from 8 a.m. to 6 p.m., Monday-Friday. **833-MCC-WFSE**.
2. A union Member Connection representative will confirm your name and contact information and verify your membership.
3. Once verified, the representative will listen to your issue(s) and provide guidance and support to resolve your issue. Please be prepared to share **documents, dates and summary** relating to your issue(s) plus contact information for your employer and/or the parties involved.

## Meet the staff on the other end of the line at 833-MCC-WFSE



Member Connection Center -- Now LIVE statewide. The one-stop shop for union information and member support. Keep the calls coming to **833-MCC-WFSE**. From left: Member Connection Reps **Paul Zurek, Emily Wiant, Christy Reed, Brent Reed** and **Brian Harris** and MCC Supervisor **Joan Gallagher**.

The new WFSE/AFSCME Member Connection Center went live statewide Nov. 6. This is the one-stop shop for union information and member support. The number to call for everyone is 833-MCC-WFSE (833) 622-9373. E-mail: MCC@wfse.org.

Meet the member connection representatives who'll be on the other end of the line:

**Brian Harris**, born and raised in Whatcom County, most recently was a management analyst with the Office of Minority & Women's Business Enterprises. As a joint law and MBA graduate, Brian brings a wealth of experience to the Member Connections Center. He is excited about

advocating for the rights of WFSE members.

**Brent Reed** was born in Orofino, Idaho and graduated from Clarkston (Wash.) High School. He spent four years in the United State Marines (mostly in Okinawa, Japan). After his tour, he got married, worked first as a heating and air conditioning technician and then in pipefitting and welding. He and his family moved to Washington where he started working for DSHS/JRA at Green Hill School. Brent became highly active in the union as a shop steward, local grievance committee, executive board, Policy Committee, and helped organize the Language Access Providers (interpreters).

**Christy Reed** has been a shop steward for 10 of her 12 years of employment with the Department of Social and Health Services. She's worked in JRA, Financial Services and Public Disclosure with the Children's Administration. Christy is the fourth out of five children, and is a wife and mother of two sons. She served as an AmeriCorps VISTA, providing outreach for Children's Health Insurance Program (CHIP) to two rural counties in Idaho. She assisted in organizing the interpreters, has served on the Executive Board for DSHS, held the office of secretary for Local 862 and has been to many rallies to save institutions from closure and to fight for our contracts.

**Emily Wiant** comes to WFSE after completing her master's in public administration at Portland State University, where she specialized in human resources and labor relations. While working as a graduate assistant in the Center for Public Service, Emily helped organize the certification of the Graduate Employee Union (GEU). Following the successful authorization card drive, Emily served on the executive council and bargaining team, where she assisted with GEU's membership organizing, capacity building, contract negotiations, and organizational policy.

**Paul Zurek** may be a familiar name to members in the Tacoma and Seattle areas. He started as a member activist while working as support staff at DSHS. By volunteering for political action, leadership training, and community engagement he transitioned to a career with our Union. Training and professional development has allowed him to promote from support staff to Council Representative. Politics, organizing, representation, administration, and customer service are all in his wheelhouse. He is passionate about the rights of workers and is grateful to our union for giving him a professional outlet for that passion.



# UNION BULLETIN BOARD

## SAVE THE DATE

The **2018 AFSCME NW Region Public Safety Conference** is scheduled for March 9-11, 2018, at the Hilton Vancouver Washington Hotel.

The conference keynote speaker will be Kevin M. Gilmartin, Ph.D., author of *Emotional Survival for Law Enforcement*.

This biennial conference brings both WFSE/AFSCME Council 28 and Oregon AFSCME Council 75 members together to discuss the latest issues affecting public



safety and law enforcement as well as an opportunity to meet and network with other public safety sisters and brothers from around the Northwest.

*Look for registration information in early 2018.*

## WFSECON17, from page 3

and we've got spines. We will never quit."

The delegates also passed Resolution 10 to further unite behind targeted groups, including defending unions and stopping right-to-work laws regardless of the outcome of the Janus case.

The delegates also elected the union's officers, celebrated members' bravery, organizing, leadership and commitment to the PEOPLE program, and met the staff in the union's new Member Connection Center (see page 4), which went live statewide Nov. 6.

- Elections. The convention re-elected all four officers for another two-year term. They re-elected President Sue Henricksen (Local 53) in a race against challenger Adam Draude (Local 443). Incumbent Vice President Judy Kuschel (Local 313) was re-elected in a race against challenger Imelda Ang (Local 443). The other incumbents, Secretary Tracy Stanley



**Karla Covington**, Local 313, Vancouver, accepts the WFSE/AFSCME Howard Jorgenson Organizing Award delivered to her by delegates after the convention.

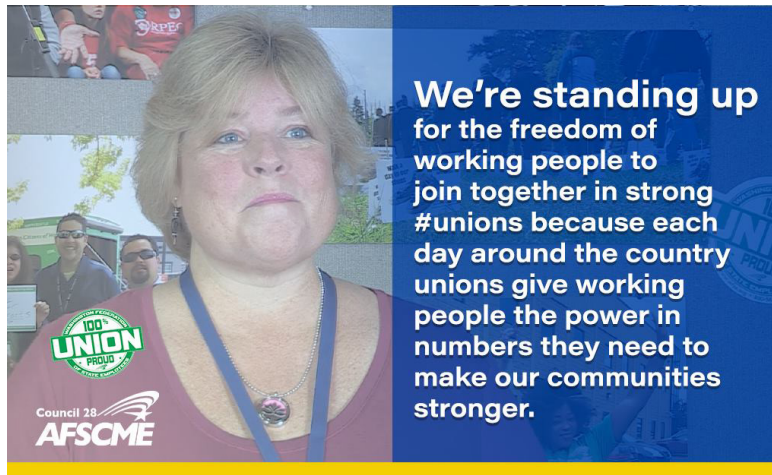


The Rosella Charvet Leadership Award went to **Aminata Salisbury**, Local 1221, Spokane -- at right in the now iconic image on billboards and more for 100% Union.

(Local 1400) and Treasurer Don Hall (Local 1466) had no challengers, so were re-elected by acclamation.



**100% Union panel.** Shortly after WFSECon17 delegates passed a resolution endorsing the movement to sign up everyone as full union members, AFSCME Sec.-Treas. Elissa McBride (left) moderated a brainstorming panel on the 100% Union Proud movement. With her (from left): **Loretta Gutierrez-Sacks** (L304); **Orson Williamson** (L304); **Jacqueline Jones-Walsh** (L843); and **Julianne Moore** (L1326).



## Members Only Benefits update



**Bright Now! Dental**  
General • Specialty • Orthodontics



### USE WISELY BEFORE YOUR DENTAL DOLLARS EXPIRE

Most dental benefits don't roll over to the next year and unused dental benefit dollars may be lost. So don't delay if you need dental care. Call a Bright Now! Dental office today!

### CHOOSE WISELY DURING OPEN ENROLLMENT

State open enrollment in November is a great time to choose the dental option that makes the most sense for you and your family. Bright Now! Dental is available to those in the Uniform Dental Plan (UDP) or Delta Care. (The Willamette option cannot be used at a Bright Now! Dental office.)

**Bright Now! Dental Save a minimum of 40% on out-of-pocket costs with Exclusive Member Pricing**

Have questions? Contact your Union Account Representative, **Carrie Magnuson** | [Carrie.Magnuson@BrightNow.com](mailto:Carrie.Magnuson@BrightNow.com) 253.405.4547

**1.888.BRIGHT.NOW**  
1.888.274.4486 | [BrightNowDental.com](http://BrightNowDental.com)

Follow us  

### Trustmark Universal Life Insurance with Long-Term Care

A member benefit from

Council 28  
**AFSCME**

**WFSE/AFSCME's new Trustmark Universal Life Insurance with Long-Term Care members only benefit is up and running for members in General Government (state agencies).**

Open enrollment runs until Dec. 15 in **General Government**. The number to call is 1-888-380-4982.

**IMPORTANT NOTE --** We're working to roll this out next to our members in Higher Education. WFSE/AFSCME will be working with state colleges and universities to authorize payroll deductions so our Higher Education members can take part as well. When those come on line for Higher Education, we'll let you know, as well as for any other payroll deduction approvals for other groups of WFSE/AFSCME members.

Trustmark  
**Voluntary Benefit Solutions®**  
PERSONAL. FLEXIBLE. TRUSTED.®

### Why this plan? Why now?

We're all getting older, and long-term care is becoming a concern for more and more people -- in fact, as many as 1 out of every 3 people under 65, and 2 out of 3 people 65 and older, are in need of long-term care. Trustmark Universal Life Insurance with Long-Term Care provides both life insurance and long-term care benefits, including home healthcare, in a simple and affordable way.

Long-term care (LTC) can be expensive -- depleting savings and limiting your care options. In addition, when someone dies, their family's income may be significantly reduced. How would you and your loved ones deal financially with a sudden loss or need for long-term care?

### Enter for a chance to WIN an iPad!

Speak to an enroller today to learn more about Trustmark Universal Life Insurance with Long-Term Care, and you can enter a drawing for a chance to win an iPad!



**To enroll, call: (888) 380-4982**  
**Monday through Friday,**  
**6:00 a.m. – 5:00 p.m., or**  
**Saturday 7:00 a.m. – 1:00 p.m.**  
**Open enrollment is 10/13-12/15.**

**AFSCME** Family Scholarship Program

**Application deadline: 12/31/17.**

<https://www.afscme.org/members/scholarships/afscme-family-scholarship>



IN  
MEMORIAM

**Sabine Borland**, an information technology specialist 2 with the Department of Health in Tumwater and a member of Local 443, died Sept. 26 at home, according to The Olympian. She was 57 and had been a WFSE / AFSCME member since 2005. A celebration of life took place Oct. 7.



Borland

**Diosdado “Don” Morales**, an attendant counselor 1 at Fircrest School in Shoreline and a member of Local 341, died Nov. 5 in a car crash in Everett. He was 42.

**Chenelle Carter (Shinelle Stills)**, a former Local 1488 activist with the original Harborview Medical Center call center in Seattle, died Oct. 22 in Tukwila. She was 50. Her death resulted from domestic violence. Her estranged husband was charged with first-degree murder. A candlelight vigil was held Oct. 27.

Chenelle played a role in organizing and building the union at UW. And she helped rebuild. During the administratorship at Local 1488, she was part of the local’s Communications Committee. There, she worked on the local’s website and bulletin boards and other member outreach.



Chenelle Carter

**Charlene “Char” Hunt**, a former Labor and Industries activist and member of Local 443 in Tumwater who helped overturn the ban on state employee raffles to raise money for charities, died Oct. 31 after a long battle with cancer. She was 68. Char Hunt was a workers’ compensation adjudicator at L&I in 2007 when she and other L&I members culminated three years of hard work on the raffle bill. They’d been frustrated by state ethics opinions that vetoed their worksite fundraising for charities. She was part of the Federation team on hand when then-Gov. Christine Gregoire signed House Bill 1599 into law on May 14,



The governor on May 14 signed into law HB 1599, allowing raffles by state employees in executive agencies for charitable purposes. It came after three years of hard work by Local 443 members frustrated by state ethics opinions that vetoed their worksite fundraising for charities. On hand for the bill signing were three Local 443 Labor and Industries activists mainly responsible for the bill: **Charlene Hunt**, **Tee Hall** and **Don Vaughan**. Pictured (from left): Charlene Hunt and Don Vaughan, Local 443; WFSE/AFSCME Lobbyist **Matt Zuvich**; Rep. Sam Hunt (House sponsor); **Dennis Eagle**, WFSE/AFSCME’s legislative and political action director; Tee Hall, Local 443; and Sen. Karen Fraser (Senate sponsor). HB 1599 passed the Senate 44-3 on 4/11/07 and the House 93-0 on 4/14/07.

2007. Her husband of 45 years, Rep. (now Sen.) Sam Hunt, sponsored HB 1599. Besides her work for charities, Char Hunt was active in the Thurston County Democrats hosting fundraising dinners and so much more. “She was just as political as I am,” Sam Hunt told The Olympian today (Nov. 3). “She just didn’t run for office.”

**George Hartwell**, the former Local 443 member scapegoated for the OK Boys Ranch scandal in 1996 but later exonerated thanks to WFSE / AFSCME representation and unity, died Sept. 28. He was 73. Hartwell was a social worker 3 for the DSHS Division of Children and Family Services in Olympia. In 1996 the worst thing that could ever happen to a state employee happened to George. He lived the Hitchcockian nightmare of being the “wrong man”: He was scapegoated in the infamous

OK Boys Ranch case involving allegations of physical and sexual abuse at a private Olympia group home for abused and neglected children. When the public spotlight hit DSHS for not properly overseeing and correcting the conditions at the OK Boys Ranch, the agency instead singled out Hartwell --and Hartwell alone -- for any agency lapse in oversight. The agency fired Hartwell in August 1996. For a year after his firing, Hartwell lived with that unjust stigma. But then as now, the



Hartwell (left); headline from the September 1997 WFSE Washington State Employee newspaper.

Federation and Hartwell’s co-workers stood strong against the injustice. Thanks to that support and solid representation by the Federation, the old Personnel Appeals Board a year later unanimously exonerated

Hartwell. The board’s 3-0 ruling validated that Hartwell had been made a scapegoat in the high-visibility case. “It’s clear to me that without the support of the union – both moral support and legal

support – that I would’ve not been able to succeed in this,” Hartwell said at the time. “My own resources would not have been sufficient to fight this battle.”

**After he left state service**, George continued his commitment to social causes. That included helping to organize a rally in Olympia’s Sylvester Park in October 2011 in the wake of the anti-worker laws in Scott Walker’s Wisconsin and during the Occupy Wall Street movement. Private services will be held.

SHARED LEAVE  
REQUESTS

**Connie Juneau**, an environmental specialist 1 with the Department of Ecology in Lacey and a member of Local 872, has been off the job since January as she recovers from several cancer surgeries. Contact: your human resource office.

**Maylee Stevenson**, a commerce specialist 2 with the Department of Commerce in Olympia and a member of Local 443, has requested shared leave donations to help cover the time she is out due to a serious medical condition which required surgery and will have a lengthy recovery. Contact: Nicole Rivera at (360) 725-2654 or your own human resource office.

**Diane Fay**, a commerce specialist 5 with the Department of Commerce in Olympia and a member of Local 443, has been approved for shared leave through Dec. 31. Contact: Nicole Rivera at (360) 725-2654 or your own human resource office.

**Steve Vogan**, a maintenance technician 2 with the Department of Transportation in Auburn and a member of Local 378, is requesting shared leave donations to help cover the time he has been out for hip surgery and recovery. Steve has been off work since July 18 and had surgery on October 10. Contact: Joan Van Hoy (206) 440-4069 or your own human resource office.

**Karen E. Johnson**, a Work-First program coordinator at the DSHS Columbia River CSO in Vancouver and a member of Local 313, is in desperate need of shared leave because of a burst appendix. She has already spent three weeks in the hospital because of multiple surgeries and will need to be off for another four to six weeks. Contact: Pam Miller at (360) 397-9704, or your own human resource office.

**Susan Boyd**, a tax specialist 3 with the Employment Security Department in Olympia and a member of Local 443, is requesting shared leave donations to help cover the time she has been out for her shoulder surgery. Susan has been off work since Aug. 30

and because of post-surgical complications is not expected to be returning to work until after Jan. 1. Contact: Kathleen Young at (360) 902-9538 or your own human resource department.

**Laura Balthrop**, an administrative assistant 3 with the Department of Health in Tumwater and a member of Local 443, has been approved to receive shared leave. Laura is in need of donations to help cover time she has missed and will miss because of a chronic health condition Contact: Elizabeth Smith at (360) 236-4516 or your own human resource office.

**Olivia Jones**, a customer service specialist 2 with the DSHS Home and Community Services office in Yakima and member of Local 1326, is in need of shared leave. Contact: Tonia Howe, DSHS HR, at (509) 225-4428 or howetn@dshs.wa.gov.

**Barb Ericsson**, an administrative assistant 5 with the Department of Health in Tumwater and a member of Local 443, has been approved for shared leave. Contact: Kim Kenderesi, (360) 236-4058 or your own HR office.

**Bonnie Jeffery**, a Work-Source specialist 3 with the Employment Security Department in Spokane and a member of Local 1299, has requested shared leave donations to help cover the time she is off while caring for her husband while he recovers from surgery. Contact: Felicia Wright (360) 902-9532 or your own human resource office.

**Teresa Esparza**, an administrative assistant 4 with the Employment Security Department in Lacey and a member of Local 443, has requested shared leave donations to help cover the time she is off work because of a degenerative back condition. To help with a donation of eligible unused annual leave, sick leave or all or part of your personal holiday, please contact Felicia Wright (360) 902-9532 or your own human resource office.

**Shawn Ulrich**, a secretary supervisor with the Department of Corrections in Vancouver and a member of Local 313, is requesting shared leave donations to help cover the time she has missed and will continue to miss during her treatment and surgeries for a detached retina. Contact: Diana White (360) 407-5704

or your own human resource office.

**John Krouse**, a Worksource specialist 4 with the Employment Security Department in Port Hadlock and a member of Local 1463, is requesting shared leave donations to help cover the time he will miss over the next months while caring for severely ill parents. Contact: Kathleen Young (360-407-4407) or your own human resource office.

**Catherine (Katie) Mangino**, an information technology specialist 4 with the Department of Labor and Industries in Tumwater and a member of Local 443, has been approved for shared leave. Katie is requesting shared leave to cover the time she will miss while caring for her husband, who has been diagnosed with terminal cancer. Contact: Laura Cadwell at (360) 902-5488 or your human resource office.

*To place a shared leave request, call the Member Connection Center at 1-833-MCC-WFSE or email tavies@wfse.org or tim@wfse.org.*



## Policy Committees elect 81-member Executive Board

WFSE/AFSCME's 10 policy committees on Nov. 4 elected their allotted members to the union's Statewide Executive Board, the highest decision-making body in the union between conventions. With the four statewide officers elected at the convention in October, these newly elected board members bring the board to its full 81-member strength (including three vacancies from Miscellaneous).

WFSE/AFSCME's 10 current policy committees meet to discuss, debate and

set policy on issues unique to the employees within their jurisdiction.

Under the formula set out in the union's constitution, each of the 10 committees gets one board position for every 500 members (rounded to the next highest 500). No committee gets fewer than two seats on the board.

Delegates also elected their three policy committee officers: chair, vice-chair and secretary.

### MISCELLANEOUS



WFSE/AFSCME President Sue Henricksen (right) congratulates newly sworn in board members elected by the Miscellaneous Policy Committee. From left: Paulsen, Erickson, Torres, Mallery and Conway.

**Miscellaneous Policy Committee Officers:** Chair - **Jeff Paulsen**, Local 443, WaTech (the former Consolidated Technology Services), Olympia; Vice-Chair -- **Scott Mallery**, Local 1221, Department of Health, Spokane; and Secretary -- **Wendy Conway**, Local 443, Office of the Insurance Commissioner, Olympia.

Board members elected from the **Miscellaneous Policy Committee:** **Wendy Conway**, Local 443, Office of the Insurance Commissioner, Olympia; **Linda Erickson**, Local 443, Health Care Authority, Olympia; **Scott Mallery**, Local 1221, Department of Health, Spokane; **Jeff Paulsen**, Local 443, WaTech (the former Consolidated Technology Services), Olympia; **Brooks Salazar**, Local 304, Board of Industrial Insurance Appeals, Seattle; and **Mauricio Torres**, Local 443, Human Rights Commission, Olympia. Three board positions remain vacant.

### EMPLOYMENT SECURITY



From left: Powers, Byrd, Bernethy, Lugo and Murphy.

Board members elected from the **Employment Security Policy Committee:** **Ginger Bernethy**, Local 443, Olympia; **Joanne Bird**, Local 443, Olympia; and **Rosanna Lugo**, Local 396, Walla Walla.

**Employment Security Policy Committee officers:** Chair - **Rosanna Lugo**, Local 396, Walla Walla; Vice-Chair -- **Cynthia Powers**, Local 1221, Spokane; and Secretary -- **Theresa Murphy**, Local 1060, Mount Vernon.



### INSTITUTIONS OF HIGHER EDUCATION

Elected to the board from the **Institutions of Higher Education Policy Committee:** **Michael Abera**, Local 1488, Harborview Medical Center (UW), Seattle; **Alex Bacon**, Local 304, Seattle College District, Seattle; **Salvador Castillo**, Local 1488, University of Washington, Seattle; **Lin Crowley**, Local 443, The Evergreen State College, Olympia; **Tommy Fuglestad**, Local 304, Seattle College District, Seattle; **Rick Halverson**, Local 1221, Community Colleges of Spokane; **Tashia Hankerson**, Local 1488, Harborview Medical Center (UW), Seattle; **Skip Jensen**, Local 330, Central Washington University, Ellensburg; **Paula Lukaszek**, Local 1488, University of Washington, Seattle; **Jerry Owens**, Local 304, Shoreline Community College; **Max Phipps**, Local 1020, Everett Community College; **Theresa Sullivan**, Local 1221, Community Colleges of Spokane; **David Sundstrom**, Local 931, Eastern Washington University, Cheney; **Craig Walker**, Local 931, Eastern Washington University, Cheney; and **Orson Williamson**, Local 304, Seattle College District, Seattle.

**Institutions of Higher Education Policy Committee officers:** Chair - **Craig Walker**, Local 931, Eastern Washington University, Cheney; Vice-Chair -- **Joe Davenport**, Local 1488, University of Washington, Seattle; and Secretary -- **Orson Williamson**, Local 304, Seattle College District, Seattle.

From left: Castillo, Owens, Lukaszek, Davenport, Fuglestad, Walker, Halverson, Phipps, Sullivan, Sundstrom, Jensen, Crowley, Abera, Hankerson, Williamson and Bacon.

### PUBLIC SERVICE

Members elected from the **Public Service Policy Committee:** Leroy Mould, Local 1671, Interpreters, Olympia; and **Quan Tran**, Local 1671, Interpreters, Brush Prairie.

**Public Service Policy Committee officers:** Chair -- **Cora Leigh**, Local 1671, Kirkland; Vice-Chair -- **Ogbamichael Goitaom**, Local 1671, Tukwila; and Secretary -- **Aida Sanchez-Vela**, Local 1671, Federal Way.



Tran (left) and Mould.



# MEET THE 81 MEMBERS OF OUR NEW E-BOARD

More on page 7.

## CORRECTIONS



From left: Malo, DeBay, Bazan and Raybell.

Members elected from the **Corrections Policy Committee**: **Don Malo**, Local 308, Community Corrections, Seattle; **Jon Oglesby**, Local 1221, Community Corrections, Spokane; and **Sean Raybell**, Local 53, Community Corrections, Tacoma.

**Corrections Policy Committee** officers: Chair - **Maria Bazan**, Local 1326, Yakima; Vice Chair - **Rick DeBay**, Local 1060, Bellingham; and Secretary -- **Don Malo**, Local 308, Community Corrections, Seattle.

## INSTITUTIONS



Executive Board members elected from the Institutions Policy Committee Nov. 4.

Board members elected from the **Institutions Policy Committee**: **Dolly Adeyemi**, Local 341, Fircrest School, Shoreline; **Brittany Barber**, Local 491, Rainier School, Buckley; **Kimberly Cogswell**, Local 782, Eastern State Hospital, Medical Lake; **Dave Greenman**, Local 341, Fircrest School, Shoreline; **Gabe Hall**, Local 862, Green Hill School, Chehalis; **John Henson**, Local 793, Western State Hospital, Steilacoom; **Aleasha Hodgson**, Local 573, Lakeland Village, Medical Lake; **Willis McNabb**, Local 491, Rainier School, Buckley; **Julianne Moore**, Local 1326, Yakima Valley School; **Cindy Reames**, Local 573, Lakeland Village, Medical Lake; **Eliga Sacks**, Local 793, Special Commitment Center, McNeil Island; **Michele Stelovich**, Local 1060, DD Field Services, Bellingham; **Allison Taylor**, Local 53, DD Field Services, Pierce County; **Dianne Womack**, Local 782, Eastern State Hospital, Medical Lake; **Steven Yates**, Local 491, Rainier School, Buckley; and **Mike Yestramski**, Local 793, Western State Hospital, Lakewood.

**Institutions Policy Committee** officers: Chair - **Dianne Womack**, Local 782, Eastern State Hospital, Medical Lake; Vice Chair - **Michele Stelovich**, Local 1060, DD Field Services, Bellingham; and Secretary - **Kimberly Cogswell**, Local 782, Eastern State Hospital, Medical Lake.

## NATURAL RESOURCES



From left: Dahlke, Padgett, Doremus, Felton, Holbrook and Olegre.

Elected from the **Natural Resources Policy Committee**: **Duane Dahlke**, Local 1466, Parks, Wenatchee; **Llyn Doremus**, Local 1221, Ecology, Spokane; **Denis Felton**, Local 1466, Parks, Coulee City; **Eddie Holbrook**, Local 1253, Ecology, Tri-Cities; **Diana Olegre**, Local 872, Ecology, Olympia; and **Rebekah Padgett**, Local 304, Ecology, Bellevue.

**Natural Resources Policy Committee** officers: Chair - **Llyn Doremus**, Local 1221, Ecology, Spokane; Vice-Chair -- **Denis Felton**, Local 1466, Parks, Coulee City; and Secretary -- **Katelyn Piazza**, Local 1466, Parks, Bremerton.

## TRANSPORTATION



From left: Wood, Willner, Fries, Schneider and Harmon-Brown.

Elected from the **Transportation Policy Committee**: **Steve Fries**, Local 1299, Moses Lake; **Ken Harmon-Brown**, Local 378, Seattle; **Sam Schneider**, Local 1299, Wenatchee; **Georgina Willner**, Local 443, Olympia; and **Theresa Wood**, Local 1020, Everett.

**Transportation Policy Committee** officers: Chair - **Steve Fries**, Local 1299, Moses Lake; Vice-Chair -- **Georgina Willner**, Local 443, Olympia; and Secretary -- **Sam Schnieder**, Local 1299, George.

## L&I



Elected to the board from the **Labor and Industries Policy Committee**: **Imelda Ang**, Local 443, Tumwater; **Perry Gordon**, Local 443, Tumwater; **Debbie Haigh**, Local 976, Tukwila; and **Carmyn Shute**, Local 443, Tumwater.

**L&I Policy Committee** officers: Chair - **Perry Gordon**, Local 443, Tumwater; Vice Chair - **Alicia Marmolejo**, Local 443, Tumwater; and Secretary -- **Imelda Ang**, Local 443, Tumwater.

From left: Gordon, Ang, Haigh and Shute

## DSHS HUMAN SERVICES



Elected from **Human Services**: **Kevin Allen**, Local 843, Seattle; **Kizzy Andreason**, Local 1060, Bellingham; **Patti Dailey-Shives**, Local 53, Tacoma; **Cynthia English**, Local 53, Tacoma; **Steve Fossum**, Local 443, Olympia; **Kodi Gaddis**, Local 443, Olympia; **Kristina Johnson-Short**, Local 1054, Colville; **Jacquie Jones-Walsh**, Local 843, Seattle; **Patricia Loving**, Local 313, Vancouver; **Katie Nelson**, Local 443, Olympia; **Carol Van Arnam**, Local 1299, Wenatchee; **Andrea Vaughn**, Local 948, Lynnwood; **Tracy (Fosty) Wilson**, Local 1060, Bellingham; and **Rebecca Withrow**, Local 1326, Yakima.

**Human Services Policy Committee** officers: Chair - **Patti Dailey-Shives**, Local 53, Tacoma; Vice-Chair -- **Cindy Hallstrom**, Local 948, Arlington; and Secretary -- **Kodi Gaddis**, Local 443, Olympia.

Human Services E-Board members take the oath of office Nov. 4.